

# Plate 24 Car Tools and Mirror

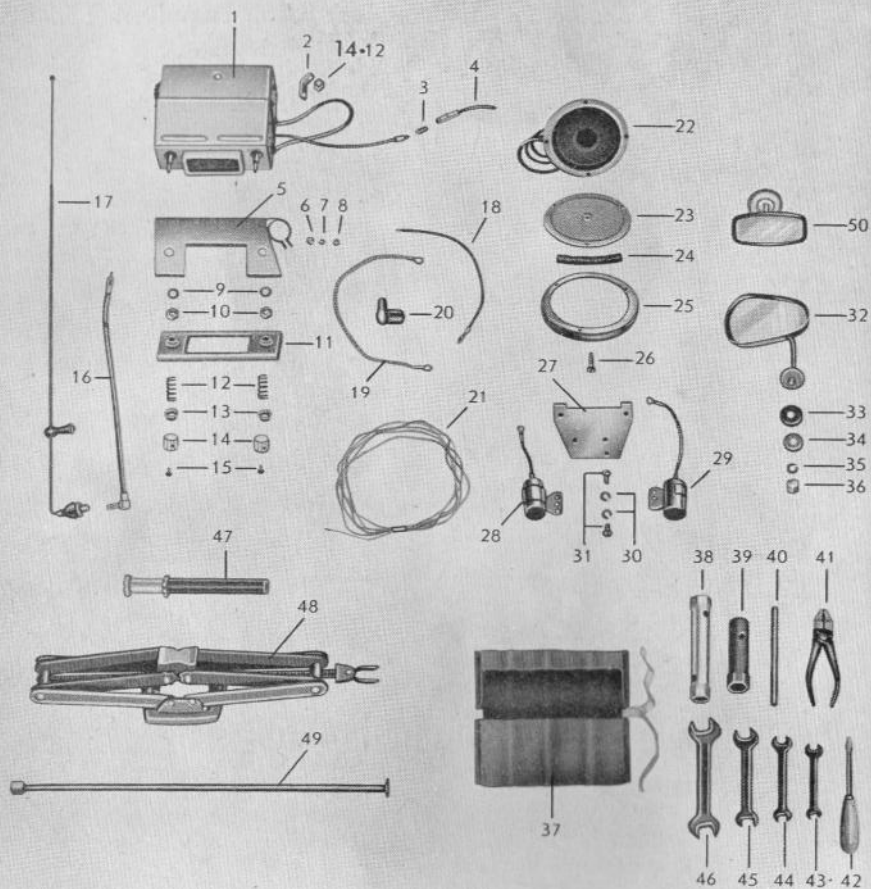


Plate	Fig.	Part No.	Qty.	Description
	1	N.L.S.	1	Car Radio
	2	N.L.S.	1	Fixing Bracket
<b>24</b>	3	N.L.S.	1	Fuse
	4	N.L.S.	1	Accumulator Lead
	5	N.L.S.	1	Covering, Complete
	6	4.00934.004	1	Hex. Nut 4mm
	7	4.06798.001	2	Spring Washer 4.3mm
	8	4.00084.019	2	Round Head Screw 4 x 8mm
	9	N.L.S.	2	Washer
	10	N.L.S.	2	Hex. Nut
	11	N.L.S.	1	Facia (Radio)
	12	N.L.S.	2	Spring (Radio Knob)
	13	N.L.S.	2	Spring Retainer (Radio Knob)
	14	N.L.S.	2	Radio Knob
	15	N.L.S.	2	Securing Screw (Radio Knob)
	16	N.L.S.	1	Connecting Lead
	17	N.L.S.	1	Aerial
	18	N.L.S.	1	Loudspeaker Earth Lead
	19	N.L.S.	1	Condenser Lead, Complete
	20	N.L.S.	1	Rubber Cap
	21	N.L.S.	1	Loudspeaker Lead
	22	N.L.S.	1	Loudspeaker
	23	13.1640	1	Grille
	24	N.L.S.	3	Felt
	25	13.1630	1	Chromium Bezel
	26	4.07985.002	3	Csk. Screw 4 x 20mm
	27	N.L.S.	1	Mtg. Bracket
	28	N.L.S.	1	Condensor
	29	N.L.S.	1	Condensor
	30	4.00137.006	2	Spring Washer 5mm
	31	4.00084.039	2	Rd. Hd. Screw 5 x 10mm
	32	N.L.S.	1	Wing Mirror
	33	N.L.S.	1	Rubber Washer
	34	N.L.S.	1	Washer
	35	N.L.S.	1	Spring Washer
	36	4.01587.003	1	Cap Nut
	—	N.L.S.	1	Glass Mirror Wing

## Car Tools and Mirror

Plate	Fig.	Part No.	Qty.	Description
	—	13.1524	1	Kit of Tools, Complete
	37	13.1524.01	1	Tool Bag
<b>24</b>	38	008.11.1351	1	Hex. Tubular Spanner 17 x 19
	39	13.1584	1	Hex. Tubular Spanner
	40	008.99.1051	1	Torsion Bar
	41	469046	1	Pliers
	42	469045	1	Screwdriver
	43	008.11.1354	1	Open-End Spanner 8 x 9
	44	008.11.1355	1	Open-End Spanner 10 x 11
	45	008.11.1356	1	Open-End Spanner 12 x 14
	46	468044	1	Open-End Spanner 17 x 19
	—	13.1392	1	Valve Key A 2265
	47	13.1551	1	Jack Tube Piece
	48	13.1528	1	Jack
			1	Jack Extension Bar
	50	13.1533	1	Rear View Mirror (Inner)

# **PARTS LIST**

## **TROJAN 4 WHEEL CAR**

**TYPE 154 B-0  
200 CC 4 WHEEL**

**UP TO VEH. NO. 312.535  
UP TO ENGINE NO. 510.000**

# Plate 1 Engine/Swingarm

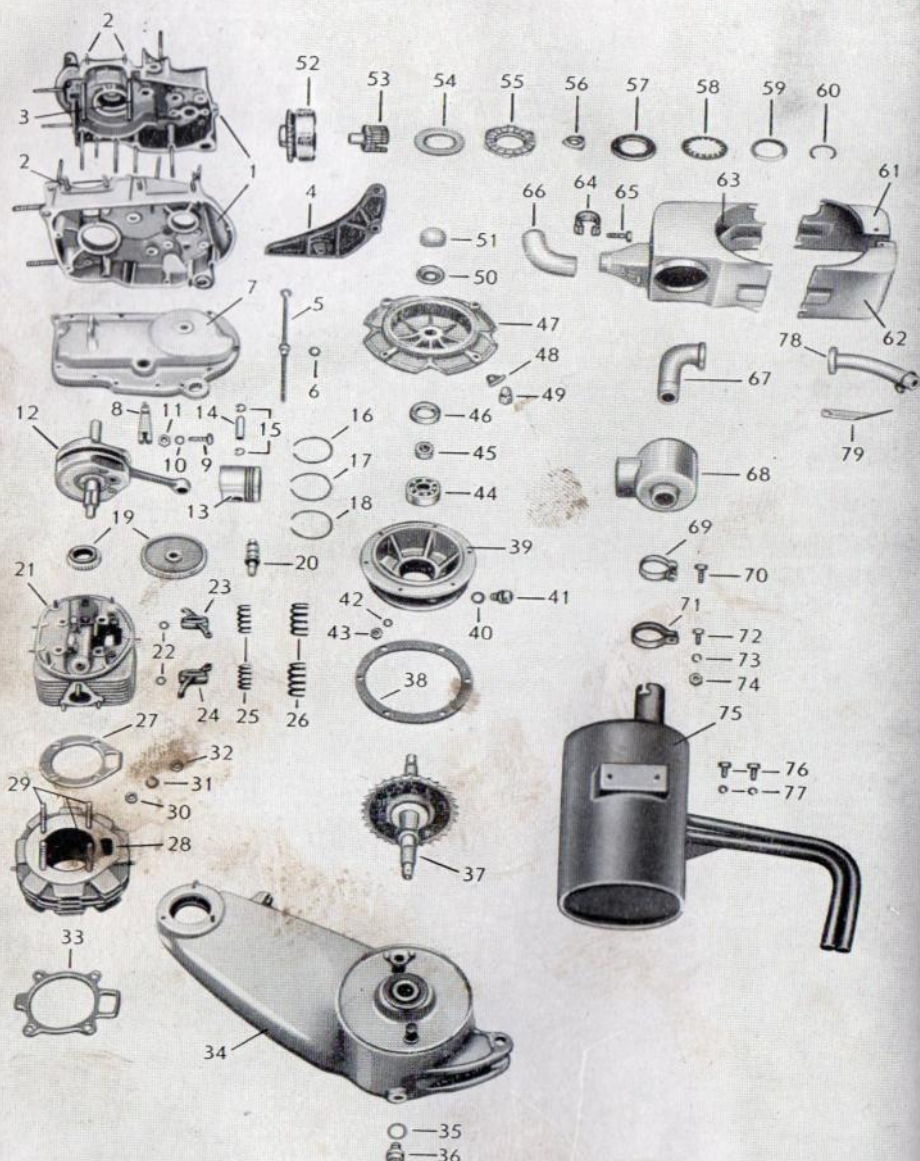


Plate	Fig.	Part No.	Qty.	Description	Engine/Swingarm
	—	000.21.0012	1	Engine, Complete, 408.BO	
	1	N.L.S.			
<b>1</b>	—	001.21.1884	1	Crank Case Housing	
	—	001.21.1886	1	Stud Set for Crank Case Hsng.	
	2	4.00835.033	4	Stud Bolt 8 x 25mm	
	3	4.00835.024	2	Stud Bolt 6 x 130mm	
	—	4.00835.023	4	Stud Bolt 6 x 115mm	
	4	008.21.1403	1	Exhaust Mtg. Bracket	
	5	001.21.1091	1	Oil Dip Stick	
	—	001.21.1076	1	Dip Stick Socket	
	6	001.99.1012			
	—	001.99.1012	1	Dust Protecting Ring	
	7	001.21.1070	1	Clutch Cover	
	8	004.21.1268	1	Gear Shift Lever	
	9	4.00084.068	1	Bolt 6 x 28mm	
	10	4.00137.008	1	Spring Washer 6mm	
	11	400937.009	1	Nut 6mm	
	12	002.21.1888	1	Crankshaft with Connecting Rod	
	13	003.21.1327	1	Piston, Complete, Std. 65mm	
	—	003.21.1327	1	Piston, Comp., 1st O/S 65.5mm	
	—	003.21.1327	1	Piston, Comp., 2nd O/S 66mm	
	14	4.73121.002	1	Gudgeon Pin	
	15	4.73123.002	2	Circlips	
	16	2.33000.013	1	Piston Ring ,Compression Std. 65mm	
	—	2.33000.017	1	Piston Ring, Compression 1st O/S 65.5mm	
	—	2.33000.019	1	Piston Ring, Compression 2nd O/S 66mm	
	17	2.33000.014	1	Piston Ring, Compression std. 65mm	
	—	2.33000.018	1	Piston Ring, Compression 1st O/S 65.5mm	
	—	2.33000.020	1	Piston Ring, Compression 2nd O/S 66mm	
	18	2.33000.031	1	Piston Ring, Split Std. 65mm	
	—	2.33000.033	1	Piston Ring, Split 1st O/S 65.5mm	
	—	2.33000.034	1	Piston Ring, Split 2nd O/S 66mm	
	19	001.21.1319	1	Timing Wheel Set with Camshaft	
	20	001.21.1318	1	Camshaft	
	—	001.21.1316	2	Drag Arm	
	—	003.21.1892	1	Cylinder Head, Complete	



Plate	Fig.	Part No.	Qty.	Description	Engine/Swingarm
	21	003.21.1891	1	Cylinder Head with Valve Stem Guides	
<b>1</b>	22	003.21.1338	2	Washers for Rocker Arm	
	23	003.21.1345	1	Rocker Arm Inlet	
	24	003.21.1344	1	Rocker Arm Exhaust	
	25	003.21.1336	2	Inlet Valve Spring	
	26	003.21.1337	2	Exhaust Valve Spring	
	27	003.21.1334	1	Cylinder Head Gasket	
	28	003.21.1347	1	Cylinder, 65mm dia.	
	—	003.21.1347	1	Cylinder, 65.5mm dia., Over-size I	
	—	003.21.1347	1	Cylinder, 66.0mm dia., Over-size II	
	29	4.00835.044	4	Stud Bolt 8 x 85mm	
	30	4.00125.013	4	Washer 8.4mm	
	31	4.00127.019	4	Spring Washer 8mm	
	32	4.00934.015	4	Hex. Nut 8mm	
	33	003.21.1335	1	Cylinder Foot Gasket	
	34	005.21.1784	1	Swing Arm	
	35	4.07603.026	1	Plug Gasket 16 x 22mm	
	36	4.00910.002	1	Plug 16mm	
	37	005.21.1354	1	Drive Shaft, Complete	
	—	005.21.1157	1	Single Roller Chain	
	38	005.21.1162	1	Housing	
	39	005.21.1349	1	Gasket	
	40	4.07603.026	1	Gasket 16 x 22mm	
	41	4.00910.002	1	Plug 16mm	
	42	4.00137.008	6	Spring Washer 6mm	
	43	4.00934.009	6	Hex. Nut 6mm	
	—	4.00835.005	6	Stud Bolt 6 x 18mm	
	44	4.00625.047	1	Bearing 6303	
	45	005.21.1002	1	Spacer	
	46	005.21.1170	1	Oil Seal	
	47	005.21.1174	1	Rear Wheel Hub (without Brake Ring)	
	48	005.21.1782	4	Quadrant Washer	
	49	002.11.1738	4	Cap Nut	
	50	004.99.1164	1	Retaining Plate	
	51	004.99.1163	1	Wheel Cap	
	52	004.21.1893	1	Clutch Housing with Chain Wheel	
	53	004.21.1361	1	Clutch Insert	

Plate	Fig.	Part No.	Qty.	Description	Engine/Swingarm
	54	004.21.1194	1	Inner Disc	
	55	004.21.1202	1	Outer Disc	
<b>1</b>	56	004.21.1366	1	Lift-off Ring	
	57	004.21.1364	1	Front End Disc	
	58	004.21.1359	1	Pressure Plate	
	—	004.21.1412		Washers (as required)	
	59	004.21.1362	1	Ring	
	60	004.21.1363	1	Locking Ring	
	61	008.21.1387	1	Cylinder Head Casing, Right, Front	
	62	008.21.1368	1	Cylinder Head Casing, Right, Rear	
	63	008.21.1388	1	Cylinder Head Casing with Heater-Outlet	
	64	008.21.1903	1	Norma Fixing Clip	
	65	4.00933.058	1	Hex. Head Screw 8 x 35mm	
	66	008.21.1904	1	Heater Elbow	
	67	008.21.1400	1	Exhaust Elbow	
	68	008.21.1411	1	Exhaust Connection	
	69	008.21.1408	1	Norma Fixing Clip	
	70	4.00933.058	1	Hex. Head Screw 8 x 33mm	
	71	008.21.1409	1	Fixing Clip	
	72	4.00933.031	1	Hex. Head Screw 6 x 20mm	
	73	4.00127.015	1	Spring Washer	
	74	4.00934.009	1	Hex. Nut	
	75	008.21.1401	1	Exhaust	
	76	4.00933.051	2	Hex. Screw 8 x 20mm	
	77	4.00127.019	1	Intake Elbow	
	78	007.21.1392	2	Spring Washer 8mm	
	79	007.21.1393	1	Fixing Bracket	
				<b>Carburettor (Pallas)</b>	
—	007.21.1394		1	Carburettor—Pallas 22/15 P	
—	007.21.1907		1	Carburettor Housing (6153)	
—	007.21.1908		1	Carburettor Housing Cover (6044-3)	
—	007.21.1716		1	Pump Jet Needle (6054-1)	
—	007.21.1906		1	Idling Jet (1034-30)	
—	007.21.1712		1	Pump Needle Jet (6124-1) 2701	
—	007.21.1905		1	Main Jet (1031-92)	
—	007.21.1909		1	Idler Jet Adjusting Screw (6152)	
				<b>Carburettor (Bing)</b>	
—	007.21.1394		1	Carburettor—Bing 1/22/115	
—	007.21.1915		1	Carburettor Housing	
—	007.21.1910		1	Clamping Screw (40.626)	
—	007.21.1913		1	Clamping Ring (59.050)	
—	007.21.1914		1	Spring Adjusting Screw (60.111)	
—	007.21.1868		1	Float Housing (30.140-121)	